

A photograph of a concrete staircase with a metal railing, viewed from a low angle looking up. The stairs lead upwards and to the right. A large blue geometric shape is overlaid on the bottom half of the image.

ODI 11 to ODI 12 Upgrade Assistant Plus



Table of contents

The Upgrade Assistant Plus (UA+)..... 4

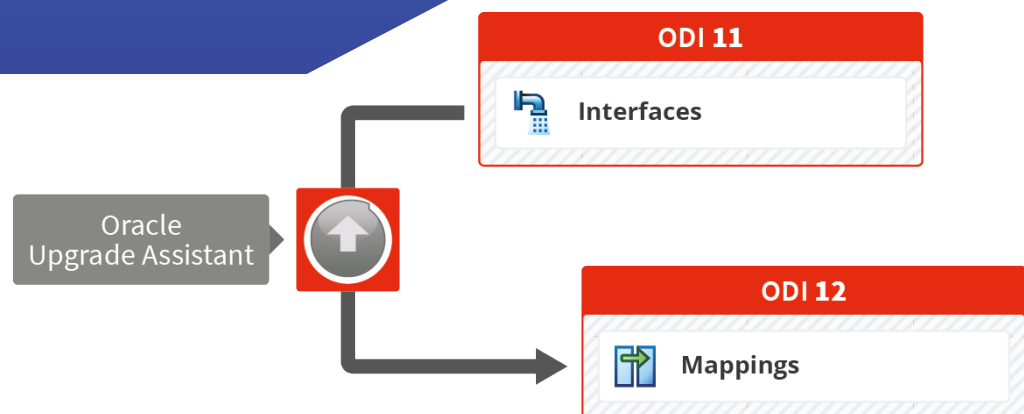
 How does it work? 4

 Results 7

Management summary

ODI 12 has introduced Mappings to replace the ODI 11 Interfaces, what makes the ODI 11 Interfaces obsolete in ODI 12. With an ODI 11 Interface you could only define one target. To create more complex data flows in ODI 11 you needed to define and use Temporary Interfaces.

With ODI 12 Mappings you can have more than one target and in one and the same Mapping you can create complex workflows, whereas in ODI 11 you needed several Interfaces.



The Oracle Upgrade Assistant

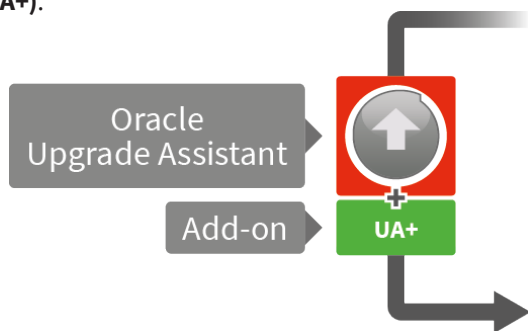
ODI 12 comes with an Upgrade Assistant (Oracle UA) that converts the ODI 11 Interfaces to ODI 12 Mappings.

The Upgrade Assistant does this in a straightforward way: the Oracle UA generates two reusable ODI 12 Mappings for each ODI 11 Temporary Interface (one is enough) and it creates a new ODI 12 Model for each ODI 11 Temporary Interface, what is not needed.

In other words, too many mappings and models are created, what results in an ODI 12 Repository containing many redundant objects.

In addition, once you start working with the upgraded version, it is not easy to clean up or work with the code generated by the Oracle UA.

To help customers to start with a clean Repository and to make sure that the ODI 11 Temporary Interfaces are upgraded correctly, we have developed and add-on for the Oracle UA, called the **Upgrade Assistant Plus (UA+)**.



The Upgrade Assistant Plus also fixes an Oracle UA bug. In the current release, ODI 11 operators are not converted correctly. Oracle UA translates the set Operators (MINUS, UNION ALL, and INTERSECT) always into a UNION.

Probably, Oracle will fix this bug in a coming release, but in the meantime our UA+ tool already solves this problem.

Conclusion

If you only use the Oracle UA, you will stuck with redundant objects (models, mappings,...) and wrong operators in ODI 12. Cleaning that up is not an easy task.

Ongoing, new development needs to deal with these flaws and as the ODI 12 Mappings that are the result of the Oracle UA upgrade are not correctly generated and have obsolete objects it is not evident to work with these.

The Upgrade Assistant Plus (AU+) tool migrates each real ODI 11 Interface to a single ODI 12 mapping with no dataset and no reusable mappings. Only the ODI 12 Models and Datastores that are really needed are generated.

Summary: The AU+ tool ensures correct ODI 12 Mappings and Datastores without requiring any rework. Therefore, the upgrade process will take less time and will be a lot cheaper.

The Upgrade Assistant Plus (UA+)

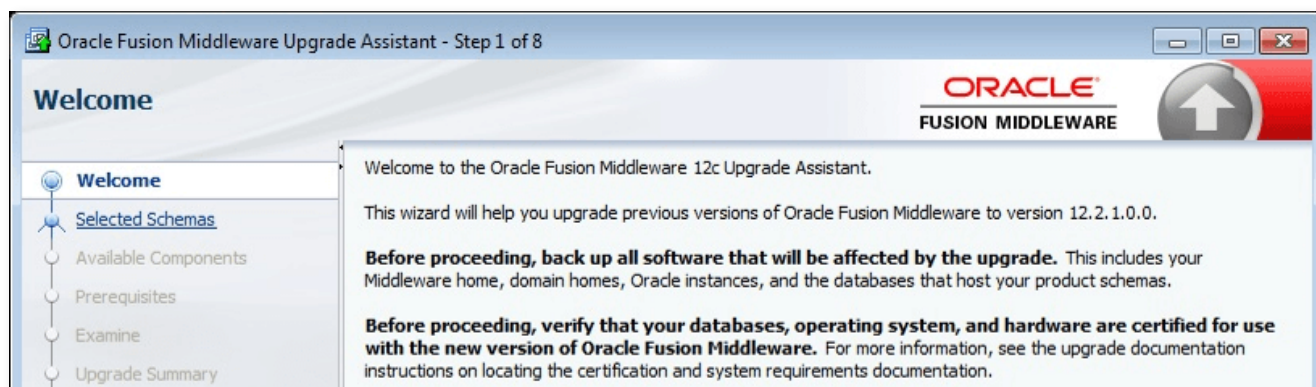
In this data sheet, we will describe how our Upgrade Assistant Plus tool will help you to create correct ODI 12 Mappings and Models and to convert the Operators correctly.

How does it work?

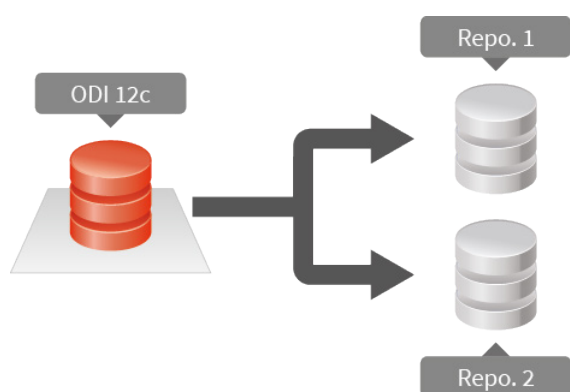
- 1 Make a backup of the ODI 11g repository, as it will be overwritten by the Oracle UA when upgrading to ODI 12.



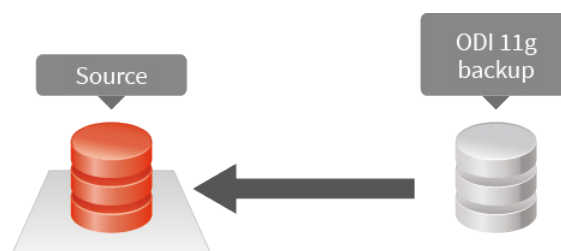
- 2 Run the Oracle ODI 12 Upgrade Assistant: It will upgrade the ODI 11g repository to an ODI 12c equivalent repository, with mappings containing datasets and reusable mappings.



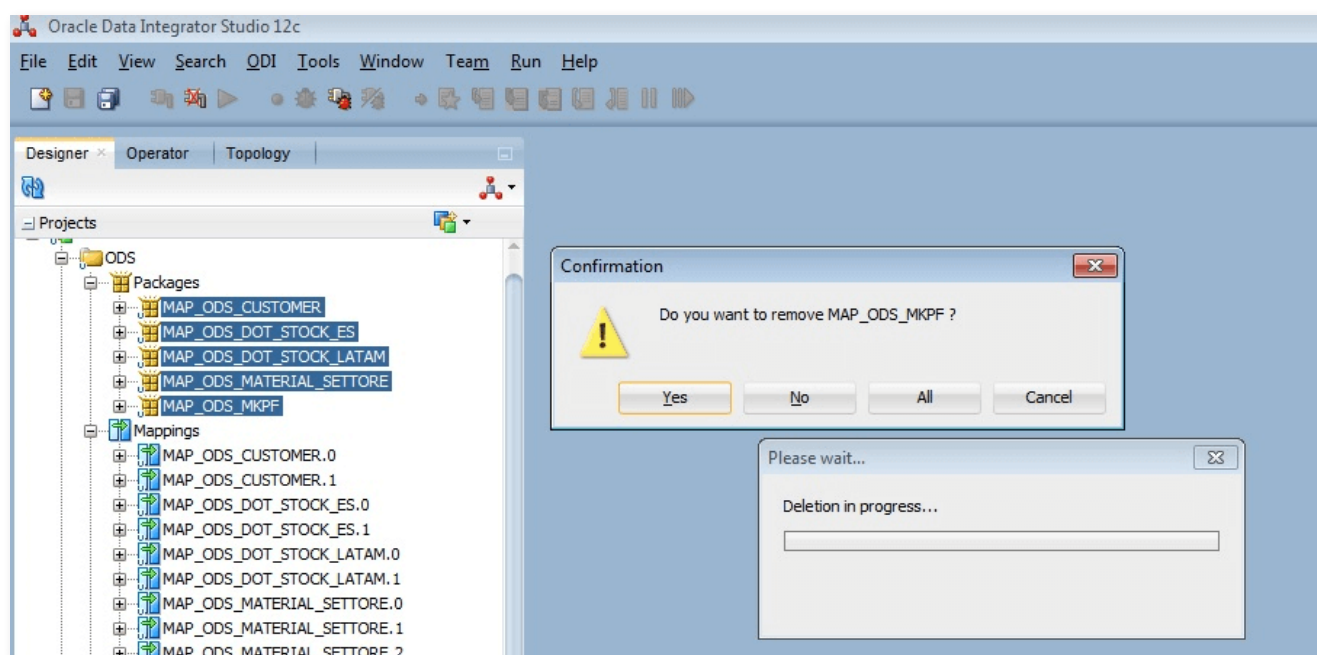
- 3 Make a copy of the migrated ODI 12c repository.



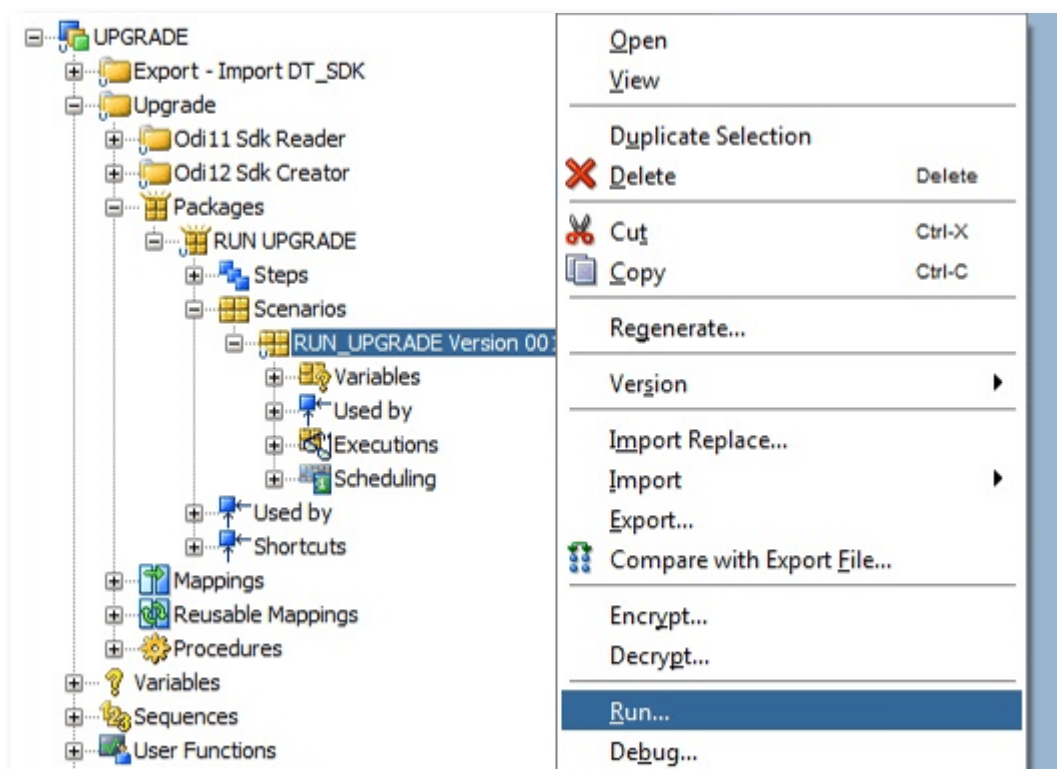
- 4 Restore the ODI 11 repository from the backup: at this stage, we have a source ODI 11 Repository and two identical ODI 12 repositories.



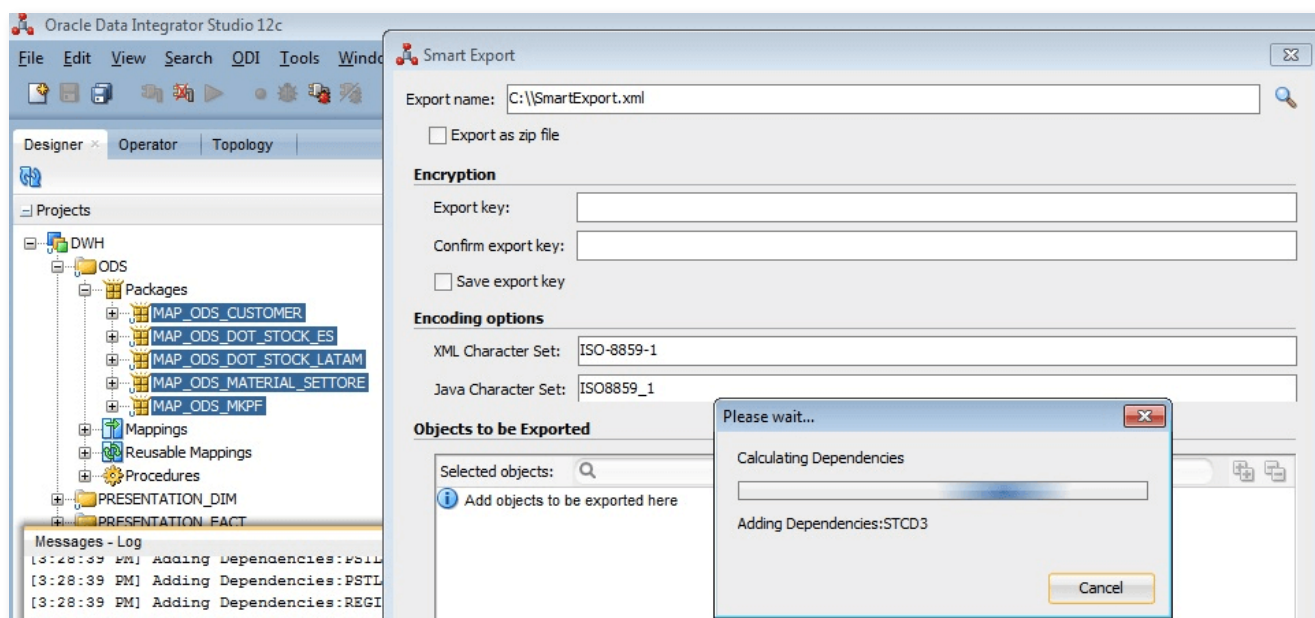
- 5 Delete the Packages and Mappings in one of the two ODI 12 Repositories.



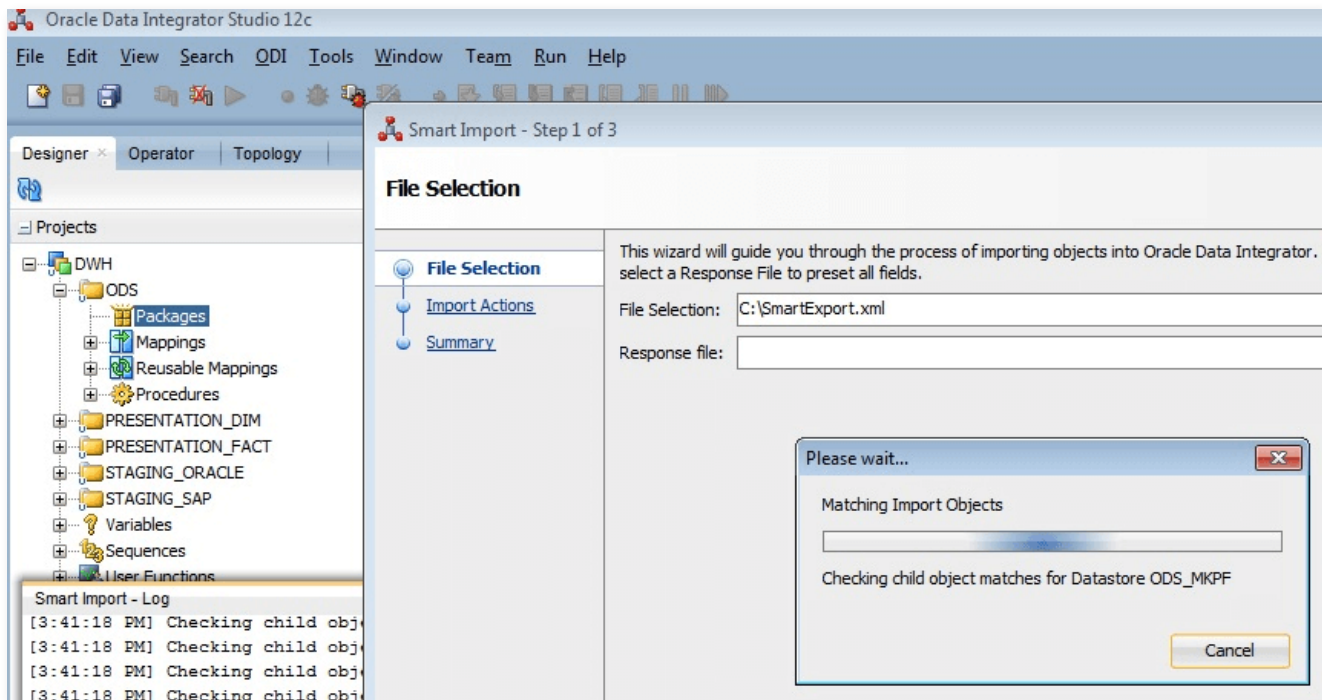
- 6 Run the Upgrade Assistant Plus tool on the ODI 12 Repository in which you deleted the Packages and Mappings. The Mappings are created (The UA+ uses the ODI SDK API library to migrate repositories).



- 7 Export all packages from the second converted repository, using the Smart Export option.



- 8 Import all the exported Packages to the first repository using the Smart Import option.



Results



Mappings

- Less Mappings
- No reusable mappings
- Clean Mappings: with a well-defined and clearly visible workflow for each ODI 12 Mapping.
- Nested Mappings: also correctly defined and made visible
- Mapping logic: the logic is grouped in one single place, readable and easily reworkable.



Datastores

- If a Temporary Datastore exists, only these that are really used are taken over. They will be grouped in a model per associated ODI 12 logical schema.

Conclusion

The upgrade process will run faster and at lower cost. This because the UA+ will automatically do the required rework to have correct ODI 12 Mappings and Datastores.



IKAN Development
Motstraat 30
2800 Mechelen, Belgium
Tel. +32 15 238427

info@kobee.io
www.kobee.io

© Copyright 2023 IKAN Development N.V.

The IKAN Development and Kobee logos and names and all other IKAN product or service names are trademarks of IKAN Development N.V. All other trademarks are property of their respective owners. No part of this document may be reproduced or transmitted in any form or by any means, electronically or mechanically, for any purpose, without the express written permission of IKAN Development N.V.